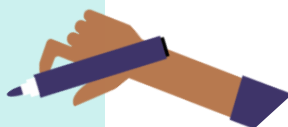


## Useful Links

Stanground Academy is a target school for the Take Your Place Programme, delivered by the Network for East Anglian Collaborative Outreach (neaco). The programme aims to increase the number of young people progressing onto Higher Education & Degree-Level Apprenticeships, working closely to support students to make informed decisions about their future. Contact your Higher Education Champion is Niki Reilly via e-mail: [niki@takeyourplace.ac.uk](mailto:niki@takeyourplace.ac.uk)

<b>Stamford College</b>	<a href="http://www.stamford.ac.uk">www.stamford.ac.uk</a>
<b>Peterborough Regional College</b>	<a href="http://www.prc.ac.uk">www.prc.ac.uk</a>
<b>Greater Peterborough UTC</b>	<a href="http://www.gputc.com">www.gputc.com</a>
<b>The Local Area Prospectus</b>	<a href="http://www.mychoice16.co.uk">www.mychoice16.co.uk</a>
<b>Volunteering</b>	<a href="http://www.do-it.org">www.do-it.org</a>
<b>Careers Information</b>	<a href="http://Nationalcareerservice.direct.gov.uk">Nationalcareerservice.direct.gov.uk</a>
<b>Informed Choices</b>	<a href="http://www.informedchoices.ac.uk">www.informedchoices.ac.uk</a>
<b>Duke of Edinburgh's Award</b>	<a href="http://www.dofe.org">www.dofe.org</a>
<b>National Citizenship Service</b>	<a href="https://wearencs.com">https://wearencs.com</a>



### NOTES:

---

---

---

---

---

---

---

---

---

---

# A Guide to Post-16 Options

## TAKE YOUR PLACE

### Information, Advice and Guidance

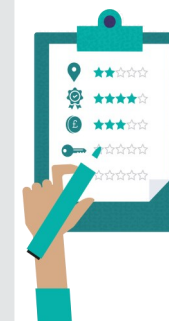
Learners at Stanground Academy are entitled to independent and impartial careers information, advice and guidance on a full range of post 16 options. Stanground Academy has a wealth of information and literature regarding careers, employment and post 16 options. We can also offer practical support with job search, completing applications & CVs. The careers team is led by Mrs Charles, who is supported on site by our Careers Advisor, Liz Duckworth who carries out 30 minutes 1-2-1 careers meetings with all year 11 students.



### Raising the Participation Age

Students are required to stay in education up to the age of 18, which could include:

- Study full time in school, college or with any training provider
- Start a full time apprenticeship, traineeship or study programme.
- Part-time education or training for one day a week (280 hours of learning per year) if you are employed, self-employed or volunteering full-time (defined as 20 hours or more a week).



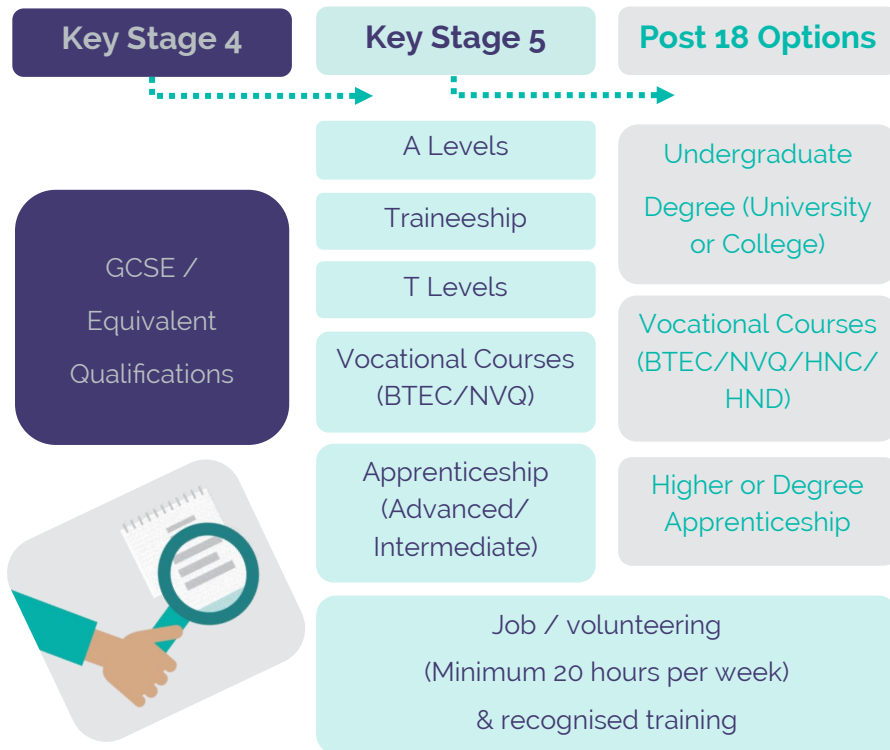
*For more advice contact Mrs Charles  
([lcharles@stangroundacademy.org](mailto:lcharles@stangroundacademy.org))*

**Find out more:** [www.takeyourplace.ac.uk](http://www.takeyourplace.ac.uk)

<https://www.stangroundacademy.org/page/?title=Careers+Education+and+Guidance&pid=560>

**Follow us :** @StangroundAcad @TakeYourPlaceHE @TakeCams

# What are my options?



**How do I choose what pathway is right for me?**

Unsure of your grades or undecided about what you want to do? We advise applying for more than 1 course. Think about:

- Do you want to study a mix of subjects or focus on just one?
- Do you want to stay in education or learn in the workplace?
- Do you need specific qualifications for a role / industry?
- Do you like exams, coursework or ongoing assessments?
- What do you like doing and what are you good at?

# Apprenticeships

**What is an Apprenticeship?**

Anyone over the age of 16 can apply for an apprenticeship. An Apprenticeship is a paid job in the world of work, where you will work for an employer, combined with learning new skills and knowledge. You will spend 20% of your time in education, gaining qualifications relevant to the industry and organisation you work with. Some apprenticeships will also involve an assessment at the end of the programme to assess your ability and competency in the job role. You will need to apply for an apprenticeship directly with the employer.



Apprenticeship Level	Equivalent
Intermediate (2)	GCSEs
Advanced (3)	A Level
Higher (4/5)	Foundation Degree
Degree (6)	Undergraduate Degree
Degree (7)	Master's Degree

**Higher and Degree Apprenticeships**

- Combining level 4 –6 academic study (tuition fees paid by the employer) and direct hands-on experience in the workplace. This pathway may take longer than a traditional degree to complete.
- There are over 100 companies, partnered with over 20 universities, offering Degree Apprenticeships. Applications are made directly to the employer and can be advertised all year round.
- Aimed at post-18 learners, you will be treated as an employee, earning at least the apprentice's minimum wage from the start.

# Higher Education

## What is Higher Education

Students work towards a degree at University, Further Education Colleges or through online distance learning. Applications are submitted online (Autumn term of Year 13 or Level 3 year 2) through UCAS. Students can apply for up to 5 courses from a choice of over 50,000 course listings. A full-time degree course typically lasts 3 years, but may be 4 years if you complete a year abroad or a year in industry.



## Tuition Fees:

Each academic year you can be charged a fee of up to £9,250. This covers teaching, course facilities, support services, etc. You will only repay this the year after graduating and once you earn above a certain amount.

## Living Cost Loan:

You can also apply for support with day-to-day living costs. The amount received will depend on your family household income, where you live as a student and where you study.

**Why Go to University:** <https://drive.google.com/file/d/1rF5XPIQH67oJWkv25Xzg4ixvwhkD8LG2/view?usp=sharing>

**Student Q&A:** <https://drive.google.com/file/d/1sf3RNYjwXCctcPzfVgXN7DhYk7zKl54U/view?usp=sharing>

**UCAS:** <https://www.ucas.com/>

**Amazing Apprenticeships:** <https://amazingapprenticeships.com/>

# Exploring my options

## Further Education Colleges

You can study A Levels, Apprenticeships and vocational courses across a wide range of subjects and levels (including foundation studies). Vocational courses at college often include work experience and students can re-sit English and Maths if they have not achieved GCSE Grade 4. Stamford College and Peterborough Regional College are local options. Child Benefit continues with full-time programmes. If your household income is low you may be eligible for a college bursary to help pay for travel, books and equipment.



## Course Level

Foundation: Entry—Level 1

Level 1

Level 2

Level 3

## Guideline Entry Requirements

No formal qualifications required

2 GCSEs at Grade 2 or above

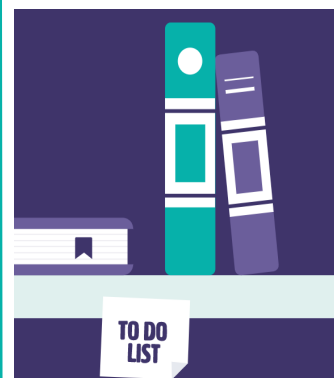
3 GCSEs at Grade 3 or above

(Some technical courses start at level 1)

4 GCSEs at Grade 4 or above (Inc. English + Maths)

## University Technical Colleges

These colleges specialise in a sector such as Engineering, STEM or Life Sciences. They have strong links to both industry and research, offering offer A Level & vocational qualifications Greater Peterborough University Technical College and the University Academy for Science and Technology in Cambridge are local colleges for Stanground. Child Benefit continues.



# Exploring my options

## Sixth Form Colleges

Sixth Form Colleges allow you to work towards vocational courses or A Levels. There is no lower school and are considered to be a cross between College and Sixth Form. You may need a minimum of 5 GCSEs at Grade 4 or above. Queen Katherine, Jack Hunt and TDA are local Sixth Form Colleges for Stanground Academy. Child benefit continues.



## Traineeships

Traineeships help young people learn new skills, & gain work experience to become 'work ready.' Short in duration, they support students to progress onto further education, an apprenticeship or employment. PRC and TCHC offer these courses locally to Stanground Academy and they usually have multiple start dates throughout the year. Child Benefit continues.



## T Levels *(May not be offered by all post-16 providers)*

An alternative to A Levels, providing a mix of classroom and on-the-job learning over 2 years, including a minimum of 315 hours (~45 days) work placement. Students will receive a Pass, Merit, Distinction and Distinction\* grading upon completion. From September 2020 3 courses will be available: Digital, Construction and Education & Childcare. They have been developed in collaboration with employers and businesses to meet industry needs & prepare students for work.



# Sixth Form at Stanground Academy

<https://www.stangroundacademy.org/sixth-form>

The Sixth Form Centre at Stanground Academy is an exciting place to study. The facilities are available exclusively for sixth form students & offer a mixture of ICT & study spaces during lessons as well as relaxing areas for break & lunch times. Our state-of-the-art building has extra space to accommodate more students & to expand the range of courses on offer. In recent years the performance of our Sixth Form has improved rapidly - we are proud to be judged as one of the top 25% of Post-16 providers in 2019 (ALPS).



The post-16 curriculum offers gateways to further & university education, offering a wider accreditation of skills & a broader choice of options. The most able pupils (achieving grade 6 or above in GCSEs) are guided onto the Academic Pathway which mainly contains traditional A-Level courses. However, there is nothing to stop these pupils electing to study other Level 3 vocational qualifications alongside should they wish. Pupils whose grades are mostly GCSE grade 5 or vocational Merits are guided onto the Vocational Pathway. This contains Level 3 vocational courses that still allow pupils to access further education if they wish. Speak to Head of Sixth Form - Mrs Houghton-Wood for more details or contact the Sixth Form Office



## Starting points for your research (including [links](#))

**Kudos**—Use your account to complete the questionnaire to get career pathway recommendations & Labour Market Information.

**Career Pilot**—A great resource with lots of information about post-16 opportunities and choices.

**National Apprenticeships** - Search live apprenticeship vacancy listings across the UK.

**Local Providers**—Explore websites for schools and colleges to see what courses are available, taking into account potential entry requirements for future studies.