

# GCSE Citizenship Learning Journey

#ASPIRE

Summer PPES

### 3) Campaign Methods



- Which of the above are relevant for your campaign target? E.g. meeting with a local business where you present a petition signed by local government. How will these methods help your campaign and why?
- You need to choose at least THREE, but think about WHY they are the best ones for your campaign! - Think about the advantages and disadvantages of the different methods.

Various Revision techniques

Big Issue Debates And Case Studies

Past papers



The 'New Right' Conservatism

Conservatism

Multi-party system

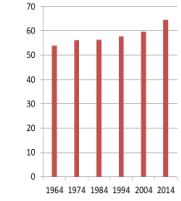
Two-party system

Legislative

- Parliament consists of two Houses
- House of Commons and the House of Lords



UK Population in Millions



- What is happening to the size of the UK population?
- During what period of time did we see the biggest rise in the UK population. What might be the reason for this?

## Theme D: Taking Citizenship Action

## Theme C: Politics and Participation cont'd

## Theme C: Politics and Participation

## Theme C: Politics and Participation

## Theme C: Politics and Participation

## Theme C: Politics and Participation

## Theme C: Politics and Participation

Year 11

